

# Attendance Matters!

Spring 1 2025



## Let's Celebrate!

As we welcome the children back to school after the break, there is great news to share about attendance.

We met our target of 95% average attendance for the autumn term!

Thank you for prioritising attendance at school. We appreciate you working with us to ensure the best outcomes for your child. Now let's see if we can improve on this and set a new target for the spring term of 96%.

The classes with the highest attendance are:

Lower School: Year 1 Birch Class 97.1%

Upper School: Year 6 Arnhem Class 96.9%



## 100% Attendance Awards

After introducing the new awards for 100% attendance over a term, we are delighted that **117 children** achieved this last term and have been awarded their bronze badge!



### How it works:

- We will continue to track attendance this term
- Children who achieve 100% attendance for:
  - **1 term** will receive a **bronze badge**
  - **2 terms** will receive a **silver badge**
  - **3 terms** will receive a **gold badge**
- The next badges will be awarded before the Easter break



## Should I send my child to school?

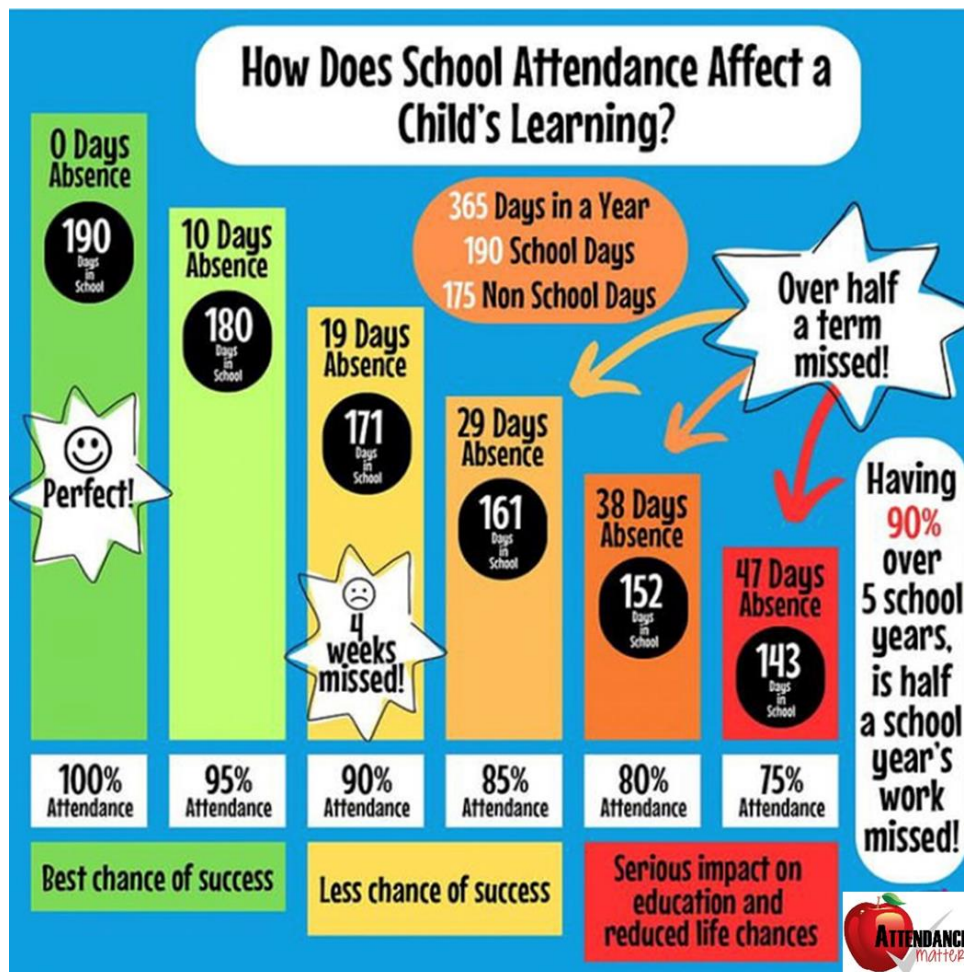
It can be a challenge deciding whether or not to keep your child off school when they are unwell. This [NHS guidance](#) can help you decide.



## Attendance Matters

**Good attendance** is considered to be **over 95%**. We monitor attendance closely below this point. If a child's attendance drops to **below 90%**, this is considered **persistent absence** and we will make contact with you to offer support so it improves.

We understand children can be unwell, particularly during the colder months, but it is important that every effort is made to ensure your child attends school regularly, as consistent attendance is vital for their learning and development.



Please report any absences to the school office by 9am

01252 314884 [info@cambridgeschool.hants.sch.uk](mailto:info@cambridgeschool.hants.sch.uk)

If you are struggling to get your child to school, please contact

our Family Support Advisor: Mrs Vaiva

[fsa@cambridgeschool.hants.sch.uk](mailto:fsa@cambridgeschool.hants.sch.uk)

## Why Punctuality Counts

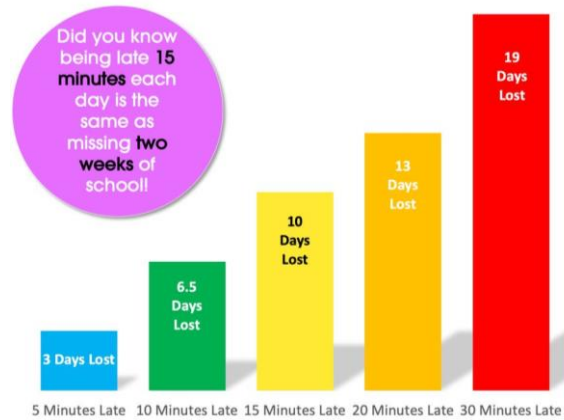
We understand that mornings can be hectic, but we would like to take a moment to remind you why arriving at school on time is so important for your child's learning and wellbeing.

Lost Minutes = Lost Learning

### The impact of late arrivals

When children arrive late to school, they miss vital learning time. Even just 5 minutes late each day adds up.

- 25 minutes of lost learning per week
- Over 3 days of learning missed per year



More importantly, arriving late means children miss:

- Morning routines that help them settle and feel ready to learn.
- Key instructions for the day's activities.
- Registration time with their class, which helps them feel part of the group.
- Focused time for interventions before lessons begin.
- The start of lessons, which can make it harder to catch up.

### How late arrivals affect children

Arriving late can be unsettling for children. They may:

- Feel embarrassed walking into a classroom after everyone else has started.
- Miss out on social time with their friends.
- Feel anxious about what they've missed.
- Find it harder to settle into learning.

### What to do

To help your child start their day calmly and confidently:

- Aim to **arrive by 8.30am** so your child has time to settle before **registration at 8.45am**.
- Build in extra time on busy mornings – it's better to be a few minutes early than a few minutes late.
- Establish a consistent morning routine at home to reduce stress.
- Contact us if you're finding it difficult to get your child to school on time.

We understand that every family faces different challenges, and we'd like to work with you to find solutions. You might be experiencing transport difficulties, morning routines that aren't working, children who are anxious about coming to school or siblings at different schools with different start times.

**If you are struggling to get your child to school on time, please contact our Family Support Advisor: Mrs Vaiva [fsa@cambridgeschool.hants.sch.uk](mailto:fsa@cambridgeschool.hants.sch.uk)**