

*'Inspiring Minds Together'*

# Welcome to Year 4

Head of Key Stage 2: Miss Curry

**Hope Grant Class Teacher: Miss Rees**

Scarlett Class Teacher: Miss Chappell (Mrs Tack)

The purpose of this booklet is to provide you with information so you feel able to support your child at home. We believe we are in a partnership with you and that your child will learn best when they know that we are working together.



## Expectations

As your child enters Year 4, the structure of the school day and the curriculum remains similar to Year 3. They are encouraged to be increasingly independent and take responsibility for their behaviour, learning and possessions. They are looked upon as role models as they are the oldest children in the school and expected to consistently demonstrate the school values, rules and our unique learning characteristics:

### School Values

Happiness Teamwork  
Honesty Respect  
Responsibility Excellence

### School Rules

Be safe  
Be respectful  
Be ready

### Learning Characteristics

All learning opportunities are planned to promote the development of the characteristics by including opportunities for children to:

**Be Brave** - Pupils are given opportunities to face challenges, celebrate mistakes and develop resilience and self-confidence.

**Be Innovative** – Pupils are given opportunities to express individualism.

**Be Collaborative** - Pupils are given opportunities to work alongside others in a supportive climate.

**Take Ownership** - Pupils are encouraged to steer their own learning.

### Drop Off and Pick Up

Please note, there are no parking facilities on site or near the school.

The day begins at 8.35am. The children are either dropped off at the front of the school or they use the kiss and drop service along Steele's Road. The children walk across the courtyard, enter through the doors marked Upper School and make their way up the 'green' staircase to their classrooms.

The children are expected to enter the classroom, organise their belongings and begin a morning task independently.

At 8.50, the gates are locked to ensure the safety of the children. If your child arrives after 8.50am, please enter via the school office. This is to ensure they are included in registration and lunch numbers.

**In order to help children make the best start to the day they need to be in school by 8.50am. Teaching begins at this time and your child will miss valuable learning which could significantly impact on their learning if they are late.**

The end of the school day remains at 3.10pm. Please collect your child from the front of the school if walking or at the kiss and drop along Steel's Road if driving. Please inform the school office if you wish to change going home arrangements or if someone else is collecting your child.

Clubs finish at 4.15pm with all children collected from the front of the school.

### **Communication**

We have an open-door policy at The Cambridge and parents are encouraged to contact the school if they have any concerns or queries. If you wish to talk to your child's teacher, please contact the school using the following email [upperschool@cambridgeschool.hants.sch.uk](mailto:upperschool@cambridgeschool.hants.sch.uk) For general enquiries, please contact the school office.

Email: [info@cambridgeschool.hants.sch.uk](mailto:info@cambridgeschool.hants.sch.uk) Telephone: 01252 314884

### **Uniform**

As your child will be a role model for all the children in the school, it is important that they wear their uniform with pride. They are expected to wear the same uniform as in Year 2 including footwear that is appropriate for wear throughout the school day. Trainers and boots are not considered appropriate.

Please ensure all items brought to school are named, including a water bottle.

Hair should be age appropriate; of a natural colour and not involve shaven sides, obvious 'steps' and/or razor lines. All long hair should be tied up with hair accessories that are small and match the school colours.

Please note, all stationary will be provided by the school. The children **do not** require pencil cases.

## Teaching and Learning

The structure of learning in Year 4 is similar to Year 3. The children learn through a mixture of strategies, working with the whole class, in groups and sometimes individually. Most subjects are taught separately but occasionally subjects are integrated in a cross-curricular approach. Learning is as practical as possible and delivered through engaging topics with Hook Days remaining as a popular feature.

Year 4 Topics					
Autumn 1	Autumn 2	Spring 1	Spring 2	Summer 1	Summer 2
Ancient Greeks	Misty Mountains	South America		Anglo-Saxons and Scots	Vikings

Year 4 Hope Grant	8.35-9	9-9.30	9.30-10.30	10.30-10.45	10.45-11.00	11-12	12.12.50	12.50-1	1-2	2-3.10
Monday	Timetables	Handwriting (10 mins) / Spelling (10 mins)	PE	Values Assembly		English			Maths	RAW
Tuesday	Handwriting	Spelling	Maths	Class Assembly		English			History/Geography	Music
Wednesday		Guided Reading	Maths	Singing Assembly	Break	English	Lunch	Registration	Science (1-2:30pm)	MFL
Thursday		Maths	Good News Assembly		English		DT/ART (1-2:30pm)	PSHE (2:30pm)		
Friday		Maths (9:00-9:50am)	English (9:50-10:45am)		Computing		PE	Guided Reading (2-2:30pm)	Chatter books (2:30-2:50pm)	Rel. (3:30pm)

This is the timetable for Hope Grant Class. **Please note the days when there is PE. Your child will come to school dressed in their PE kit on Monday and Friday.**

**Commented [AB1]:** I have updated the timetable to be our current one.

The children study the following subjects in Year 4 as outlined in the National Curriculum

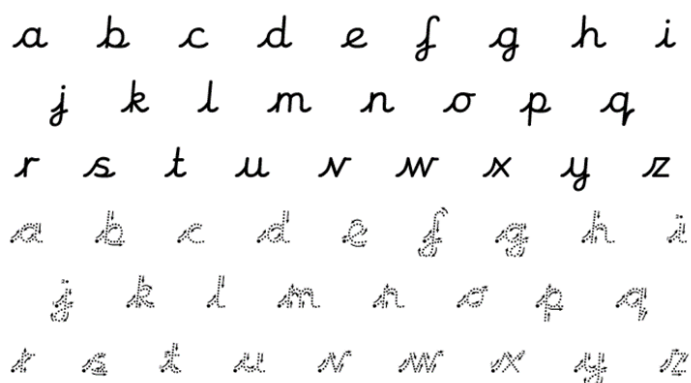
Year 4 Curriculum	
<ul style="list-style-type: none"> <li>• art and design</li> <li>• computing</li> <li>• design and technology</li> <li>• English</li> <li>• geography</li> <li>• history</li> <li>• modern foreign language</li> </ul>	<ul style="list-style-type: none"> <li>• mathematics</li> <li>• music</li> <li>• personal, social and health education</li> <li>• physical education (PE)</li> <li>• religion and world views</li> <li>• science</li> </ul>

For further information on the curriculum, please visit the school website and look under the 'Our Learning' tab. There are also topic overviews that are sent home at the start of each topic and detail the learning within the topic so you can help at home if necessary. These are also available on the [school website](#).

### **Handwriting**

At The Cambridge, all children are expected to write in the cursive style (see table below). Throughout their time in KS2, children will be given the opportunity to earn a 'pen licence' to be able to write in black pen in their books (not maths). To earn the 'pen licence', children need to show consistent cursive handwriting throughout all subjects e.g. evenly spaced, legible, accurate ascenders/descenders etc... Once awarded their 'pen licence', consistency is expected. If children's handwriting does not maintain the expected standard, they will use a pencil until three pieces of consecutive work demonstrates the standard of which they are capable.

#### **Pre-cursive Letter Formation**



### **Assessment**

The children's learning is constantly assessed so our planning for their next steps can be adjusted to ensure they progress. You will have the opportunity to view your child's work and discuss progress at Parent Evenings in the autumn and spring terms. In the summer term, you will receive a written report which you can discuss with your child's teacher if you feel it necessary. We will contact you if we feel there is any cause for concern at any time throughout the year. If you are worried about your child's progress, please make an appointment with your child's class teacher to discuss it as soon as possible.

### **Home Learning**

Research has repeatedly shown that parental involvement in their child's schooling is a more powerful force than other family background variables, such as social class, family size and level of parental education. Parental involvement has a significant effect on pupil achievement throughout the years of schooling. The purpose of home learning is to enhance a child's learning and provide a partnership between home and school that is clearly identifiable to the child.

The tasks set should not intrude unreasonably into the interests of the children beyond the school day. We suggest setting aside a specific time for your child to complete their home learning to embed routines that will develop their study skills as they progress through school.

In Year 4, the expectations are:

- **Reading: Daily**

Children may read their school reading book or one they have selected from home. School reading books will be changed at the discretion of the class teacher.

It is vital that all children read aloud every day at home either to increase their fluency or, equally importantly, to discuss what they have read to develop their comprehension skills. This is important even if your child is a fluent reader as they might be able to read every word but not understand what they have read. There is guidance in the front of the reading diary and the class teacher may add challenges for your child to complete too. In Year 4, we would like to encourage the children to record their own reading in the reading diary but we require a parent or carer signature to confirm it has taken place. The reading diary and current reading book, should be brought to school **every day** in the plastic reading wallet. It is important that you continue to read to your child as this helps to develop their vocabulary which in turn will enhance their writing.

- **Maths: 3 times weekly**

Your child should practise their times tables using Times Tables Rock Stars. This is in preparation for the National Multiplication Tables Check at the end of Year 4. If you experience any challenges with your child accessing a device to practise Times Tables Rock Stars, please do not hesitate to contact the school.

- **Home Learning Task: weekly**

**Two** home learning tasks related to maths, English or topic work will also be sent home on Friday- this is an increase from Year 3 which was previously one piece. This task is to be completed and returned to school by the following Thursday.

A home learning club will be available every Thursday lunchtime, for any children needing support with completing their work. In addition to this, to enhance the topic, your child has the option of completing a project. This will be explained in the topic overview, sent home at the start of each half term. If there is a specific objective that your child needs to practice, teachers will communicate this with you.

Please encourage your child to complete all their homework carefully, with any written work using the cursive (joined) handwriting style (see handwriting section)- use the pen licence to encourage this.

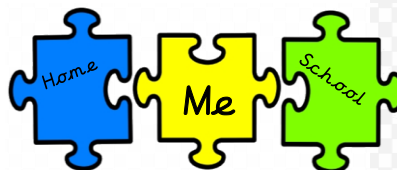


The Year 4 team look forward to working with you and your child and would like to take this opportunity to remind you of our Home School Agreement. Please take the time to read it **with your child** and then sign both copies before returning the purple one to school. **It is important that your child signs their section too.**

## ***'Inspiring Minds Together'***

### **Year 4 Home/School Partnership Agreement**

Children learn best when the significant adults in their lives work together to encourage and support them. Schools alone cannot address all of a child's developmental needs: The meaningful involvement of parents and support from the community are essential.



We, at The Cambridge, share the same goal as you: we want your child to be safe, happy and thriving.

Comprehensive research has shown that parent involvement in education had a larger effect on children's academic engagement and achievement than most other interventions.

It is undeniable that those first years in their school career influence the mind-set and pathway for the rest of their school journey. So let's work together and get it right!

#### **This home-school agreement:**

- Acts as a reminder of commitments
- Underpins the school's ethos and stated beliefs
- Acts as a clear starting point for the start of every year for children, parents and school staff
- It provides a starting point for conversations.

#### **The School**

##### **We will endeavour to:**

- Nurture your child in the values of the school, daily in everything we do.
- Foster an environment in which your child can be nurtured and achieve his/her full potential.
- Provide a balanced curriculum and meet the individual needs of your child.
- Enable high standards of work and behaviour to be achieved through building good relationships and developing a sense of responsibility.
- Model the school values, learning characteristics and be a positive role model to the children.
- Inform you about school matters through regular newsletters and notices about special events.
- Provide information about your child's progress through; end of year reports; parents' evening and open days.
- Offer opportunities for you to become involved in the daily life of The Cambridge Primary School
- Ensure your child is kept safe through rigorous Child Protection and Safeguarding procedures. These policies are available on the website.

Signed: *The Cambridge Primary School*

**The Parents**

**I/We will endeavour to:**

- Ensure that my child goes to school regularly, on time, properly equipped and in correct uniform.
- Model the school values.
- Inform staff of any concerns or problems that might affect my child’s work or behaviour.
- Contact the school or provide a note of explanation if my child is absent on the first day of absence.
- Ensure the school has an up-to-date contact number in case of emergency.
- Support the school’s guidelines for behaviour.
- Take an interest in my child’s learning/education by supporting and encouraging home learning. This includes reading regularly and writing in their reading record; supporting my child to learn spellings, number facts and undertaking other opportunities for supporting my child.
- Ensure that my child gets enough sleep and is well fed so that he/she can get the most out of his/her school experience.
- Provide a daily fruit or veg snack, or communicate any difficulties in doing this with school (as KS2 children are not eligible for the national daily fruit and veg snack).
- Attend parents’ evenings, discussions about my child’s progress and other meetings that provide important school information.
- Support the school in fulfilling its aims.
- Discuss any concerns, regarding behaviour, with the class teacher or headteacher.
- Be considerate to the local residents when parking and driving around the area.

Signed..... Date.....

Printed.....

**The Children**

**I will endeavour to:**

- Come to school every day and on time.
- Be prepared for the school day.
- Wear school uniform (and correct PE Kit) and take pride in my appearance.
- Make every effort to complete my home tasks on time and to the best of my ability in the set time given.
- Be a role model and display the school values and learning characteristics.
- Respect myself, other pupils, and the staff.
- Be polite and helpful to others whilst standing up for what is right.
- Think through what I say and do carefully
- Share and talk about any problems I may have.
- Be open to discussion about my thoughts, feelings and relationships both at school and home.
- Approach all tasks with a positive outlook and belief that perseverance will help me to succeed.
- Take care of school and own equipment.
- Tell my parents and family members about what happens in school.

**I will be responsible for my safety, my learning and my actions to ensure I can be best I can be at all times!**

Signed by the child..... Date.....